

MT-KN3208CI

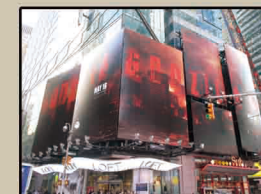
Applications



Front lit
Bill Board



Flex Banner



Blacklit
Light Box



Mall Poster



Movie
Advertisement



Vinyl
Advertisement

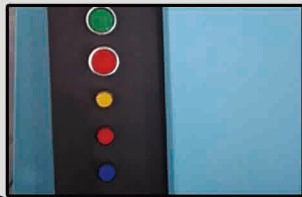


www.MTuTech.com

MeiTu Digital Industry Co.,Ltd
Email : admin@mtutech.com
Mobile : +8613636627448 (WhatsApp)
Tel : +86 21 52066103
Add : Building 8A, CaoHejing Hi-Tech Park
of Pujiang, No.188 Xinjun Rd., Minhang
District, Shanghai, 201114 China.

Specifications

Model	MT-KN3204C	MT-KN3208C	MT-KN3204CI	MT-KN3208CI	
Print Head	4pcs Konica-KM1024	8pcs Konica-KM1024	4pcs Konica-KM512i	8pcs Konica-KM512i	
Number Of Nozzles	1024		512		
Color	4 Colors: Cyan, Magenta, Yellow, Black				
Resolution	Up To 720*1440				
Size Of Ink Droplet	42PL		30PL		
Max. Print Width	Up To 3200mm(126")				
Max. Media Width	Up To 3200mm(126")				
Print Speed	Standard Output	90 Sqm/H	180 Sqm/H	120 Sqm/H	240 Sqm/H
	High Precision Output	80 Sqm/H	160 Sqm/H	110 Sqm/H	220 Sqm/H
	Ultra High Precision Output	70 Sqm/H	140 Sqm/H	100 Sqm/H	200 Sqm/H
Media	Flex,Banner,Knife Coated Substrate,Double Side Printing Banner PVC,Advertising Cloth,Adhesive Vinyl,One Way Vision,Mesh,Reflective Banner,Reflective Vinyl				
Ink	Solvent Ink				
Control Software	PrintManager				
RIP Software	Wasatch/Photoprint/Maintop				
Printer Dimensions	L5150 * W1050 * H1470mm				
Packaging Dimensions	L5600 * W1150 * H1770 mm				
Gross Weight/Net Weight	1200kg/900kg				



Separate Color Cleanout System



Separate Infrared Heating System



Separate Machine & Heater Power



Printhead Moisturizing System



Ink Circuit Heating System



Bulk Ink Supply System



Carriage Height adjustable

Wider Size Printing Platform

3.2m Printing Width

Low Noise Linear Guide Rail

Konica512i Printheads

Aluminum Alloy Girder



Dual Sliders

Temperature Controller

Excellent Stepping Rollers

Integrated Framework Machine Body

Three Media feeding System Optional

Features

1. MT Konica Solvent Printer adopts wider size printing platform. Client can choose 4pcs or 8pcs Konica 1024 printheads model according to their demand at the beginning. This kind of solvent printing machine can be installed up to 8pcs Konica KM1024 printheads for maximum. Client can choose 4pcs or 8pcs Konica printheads model according to their demand at the beginning. This kind of solvent printing machine can be installed up to 8pcs Konica KM512i printheads for maximum.
2. MT Konica Solvent Printer equipped with Four in one temperature controller with Three-stage adjustable temperature function.
3. MT Konica Solvent Printer adopts separate machine's main power and heater's main power.
4. As the top quality Konica Solvent Printer, it adopts linear guide rails with double-slider and sound off function, more durable and reliable for high precision printing.
5. MT Konica Solvent Printer adopts separate infrared heating system to speed up printouts drying (optional).
6. MT Konica Solvent Printer equipped with secondary ink tank and ink circuit heating system suitable for low temperature working environment in winter.
7. MT Konica Solvent Printer equipped with separate colors cleanout system.
8. MT Konica Solvent Printer equipped with automatic cleaning system.
9. The height of printhead carriage plate can be adjust freely and easy to operate.
10. MT Konica Solvent Printer equipped with unique printhead protection stack with intelligent printhead moisturizing device.
11. MT Konica Solvent Printer adopts precision mechanical parts for higher accuracy of feeding and collecting system.
12. There are three feeding systems are available for MT Konica Solvent Printer, three take up systems are optional too. Three feeding system for different operate conditions: inserted feeding type with one roller, deposited feeding type with two rollers, deposited feeding type by dragging media with three rollers;
13. MT Konica Solvent Printer was installed LED lamp inside of printing platform.
14. MT Konica Solvent Printer equipped with 400W Panasonic servomotor AC drive motor.