

MT-3207DE

MT
www.MTuTech.com

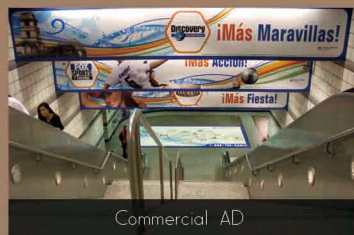
MeiTu Digital Industry Co.,Ltd
Email : admin@mtutech.com
Mobile : +8613636627448 (WhatsApp)
Tel : +86 21 52066103
Add: Building 8A, CaoHejing Hi-Tech Park
of Pujiang, No.188 Xinjun Rd., Minhang
District, Shanghai, 201114 China.



Applications



Car Wrap



Commercial AD



Blacklit Light Box



Vinyl



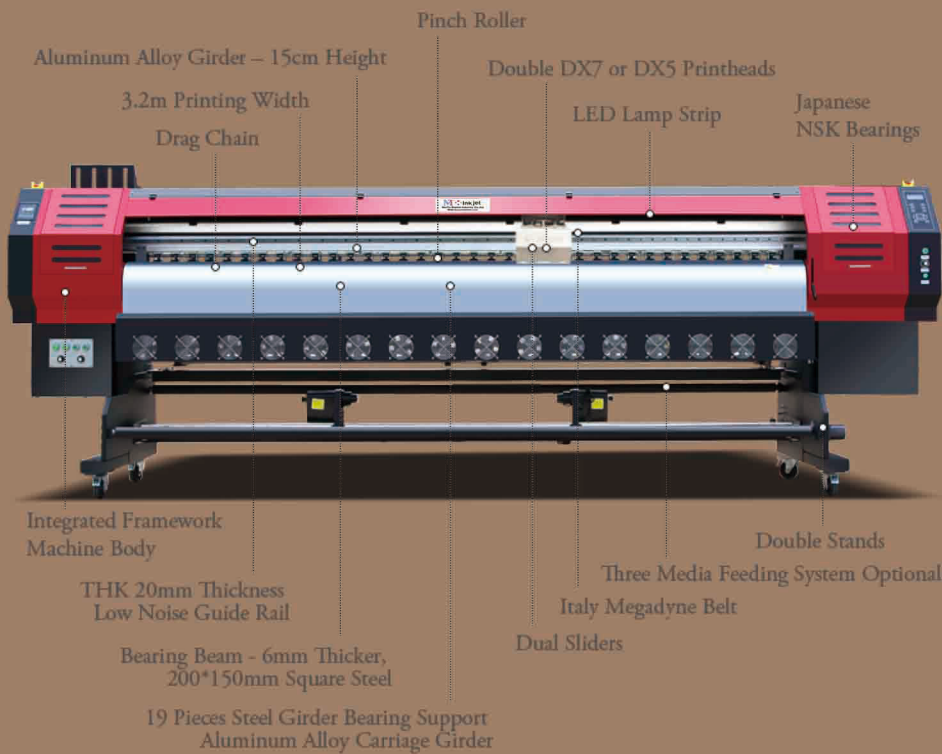
Billboard



Outdoor AD



Roll-Up Poster



Features

- 2015 premium high precision micro piezo printer
- Adopt THK 20mm width linear guide rail with two slide blocks, efficiently increase rigidity and torsion resistance, higher precision and mute silence in printing
- Original Leadshine motor for precision and stable motion control.
- Industrial designed rigid aluminum alloy main girder ensures firm and steady printout
- Integrated Anti-collision sensor in each side of Printhead carriage to prevent the Printhead from unexpected damage. The sensors automatically detect the printing plate or any force on the way going. it prevents any possible strike to the print heads
- Widened machine stand , aluminum alloy made, ensure the machine stands firmly while printing
- Up to 6+ variable dot size printing technology and maximum 2880dpi resolution help you to deliver outstanding image quality, precisely control each dot, for beautifully sharp image, satisfy even the most discerning customers
- Standard duel print heads maximize the performance of the productivity and high print quality
- Adopt VSDT variable dot technology, droplet size from 3.5pl to 27pl, achieve stunning and seamless gradation print quality
- Multi-touch pinch roller has been introduced with media feeding system. More accurate media feeding for wide format and continuous printing.
- With the latest USB 2.0 control system for faster data transmission, support Windows 7 / 64bit operating system
- Bulk ink supply system just ease your mind from worrying about filling ink again and again
- Dual motorized media take-up & feeding system for broad media choice, easily handle heavy duty media.
- New media handling systems are introduced to the RT320D printer to handle broad weight of media. It standard come with one heavy duty feeding & take- up system supporting of 3.2m wide roll of media, and optional two standard feeding & take-up systems for 1.52m wide plus 1.27m wide media or two 1.27m wide media of same time printing , you can switch the two media handling systems by push in and pull out, Integrated Automatic Media Correction Roller in both systems enables accurate feeding in wide format media with high precision printing
- Upgrade to UV Roll-To-Roll option is available to help you extend your business with less cost.

Specifications

Model	MT-3207DE	
Print Head	Mirco Piezo Print Head Epson DX5/DX7,Ricoh Gen5 printheads optional	
Ink	Water Based Dye Ink/Eco Solvent Ink	
Maximum Print Width	3200mm	
Resolution	540dpi, 720dpi, 1440dpi	
Print Mode	Pass Number/One Print Head	Pass Number/Two Print Heads
Sketch Mode	3 Pass, 24m ² /h	3 Pass, 48 m ² /h
Standard Mode	4 Pass, 17.5 m ² /h	4 Pass, 35 m ² /h
High Quality Mode	6 Pass, 12 m ² /h	6 Pass, 24 m ² /h
Precision Mode	8 Pass, 9 m ² /h	8 Pass, 18 m ² /h
High-precision Mode	12 Pass, 6 m ² /h	12 Pass, 12 m ² /h
Ink Capacity	1000cc /Color	
Three-section Heating System	Three-section Embedded Heating System, Temp:30-65°C	
Drying System	Equipped With Cooler Fan And Optional Infrared Heater With Adjustable Temperature	
Operation Environment	Temperature: 15-35°C , Humidity: 40%-65%	
Data Transmission Interface	HI-USB2.0/3.0	
Auto Print Head Cleaning System	With Anti-blockage& Moisturizing Function	
Media Adsorption System	Multi-sectional Intelligent Air Suction System With Adjustable Strength	
Dimension (L*W*H)	4580 * 970 * 1500mm	
Packaging Size(L*W*H)	4800 * 1100 * 1700mm	
Gross Weight & Net Weight	830kg / 750kg	
RIP Software	Maintop/PhotoPrint/Wasatch	
Power	AC220V, 50HZ/60HZ	

